

www.RG3suspension.com

AUGUST 2006

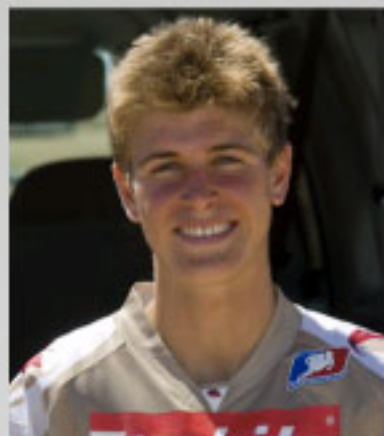


RG3 Rider: Travis Pastrana Double Backflips XGames

He said he'd never do it again. After landing the first double backflip in Moto X history earlier this year in Spokane, Wash., Travis Pastrana said he was done with the trick. He told his parents, he told the media, he told himself. Then he changed his mind.

On Friday night, Pastrana—who had never won a best trick gold—landed the first contest Moto X double backflip during best trick finals. The STAPLES Center crowd erupted as Pastrana, the final man to ride, motioned his intentions to the crowd, rolled down the start ramp and launched into history.

Travis runs RG3 Suspension and triple clamps. As he has been for the past 5 years. We would like to congratulate him and we are elated that his determination, skill, and some help from RG3 have propelled him to the top of the Freestyle world.



RG3's newest rider Ryan Dungey

Haven't heard of Ryan Dungey yet? You will. This month Team Suzuki announced their newest factory rider as relatively unknown Amateur Ryan Dungey. In an uncommon move, Suzuki skipped Ryan over the "B" team where most rookies cut their teeth and placed him straight into the big leagues, racing the 125 class.

Why all this, you ask? "He's fast," said RG3 President Rob Henriksen, "really fast." Over the past several weeks RG3 has been working with Dungey and Team Suzuki to get his suspension dialed in. Long days at the test track have proved to RG3's staff that Dungey has the drive and work ethic to make it big.

Ryan Dungey will be riding a Factory RMZ 250 with an RG3 Diamond Kit, RG3 Smart-Valves, RG3 Linkage and RG3 Triple Clamps. All of which are available to the public.

All New Color for KX Clamps

A new color in stock, our KXF upper triple clamps are now available in Factory Brown. We decided it was time to throw a new color in the mix with our triple clamp lineup and what you see here is the resulting vote.

Aside from black and machined, this color is available for the '06 250F and 450F models only. Sorry 2-strokers, if you want the factory appeal, you'll have to upgrade to the four-stroke models (no, we are not active Kawasaki sales pushers)...or you can always just bug us to death until we make the 2-stroke models in brown too.

The new color is bound to attract heads at the tracks, that is, if the beastly four-post design doesn't already do it. This is the same color as the factory clamps that Kawasaki provides – now available in patented four-post, rubber mounted, triple clamp form! Get yours today!

